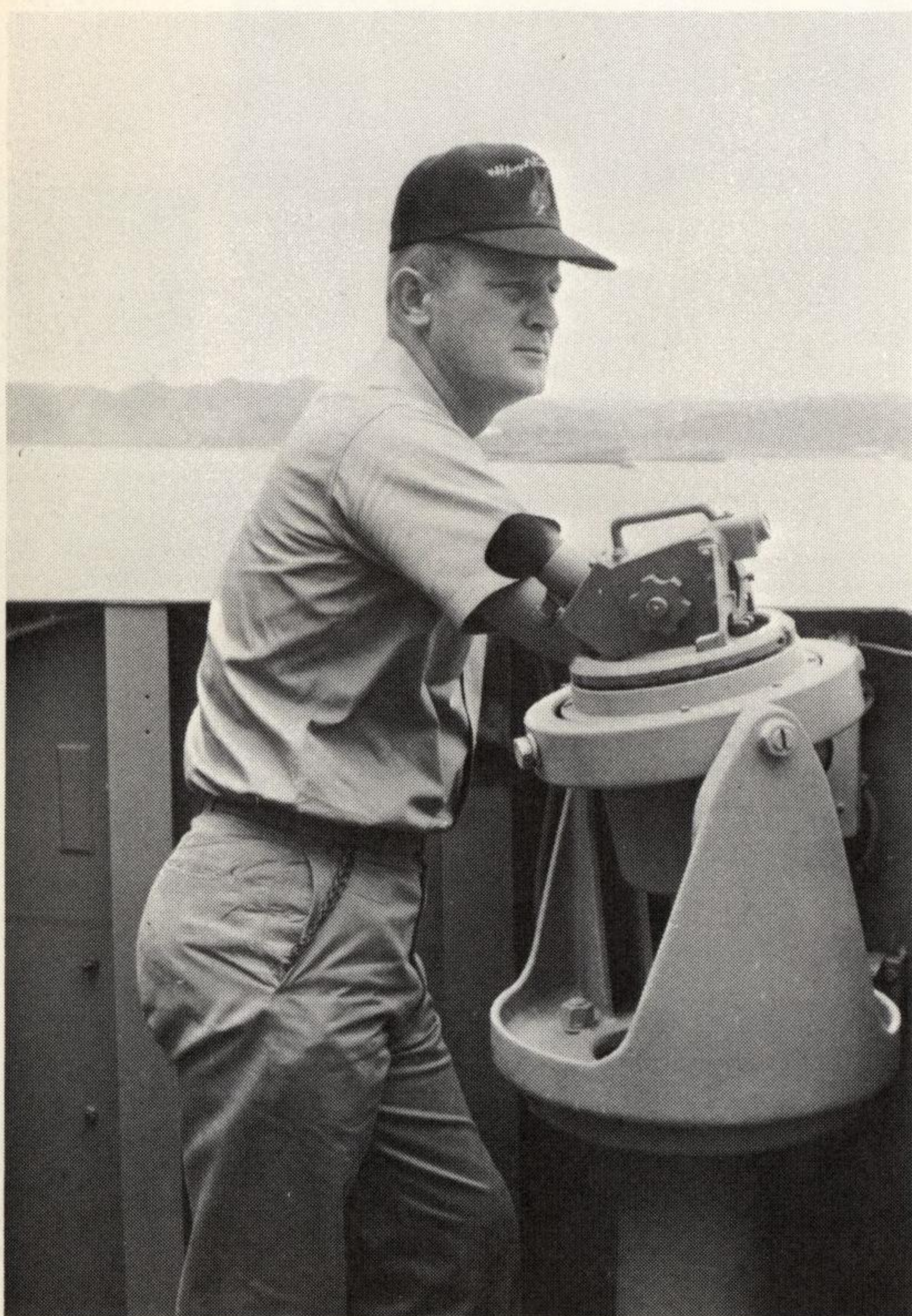




For most of the deployment **Joseph Strauss** served as the flag ship for Commander Destroyer Squadron Eleven. From the signal bridge, the scrutinizing eye of the Commodore, Captain **George Fromknecht** was always upon DDG-16. Commander Seventh Fleet, Vice Admiral **Weisner**, was never far away and visited once in person.

The ships organization and regulations manual describes the basic function of the ships Executive Officer as "aide or executive to the Commanding Officer in carrying out the mission of the ship. He is specifically charged with coordinating and supervising the performance and administration of the command as a whole including matters pertaining to morale, discipline, welfare, training, safety, exercises, rights and privileges of individuals."



In other words, the X.O. is a paper pusher, policeman, counselor, confidant, arbitrator and organizer, not necessarily in that order depending on the individual. Our two Executive Officers, Commander **David Jeremiah** and later Lcdr. **Ray Harbrecht** effectively performed these tasks. Each exercised command and control in his own style.