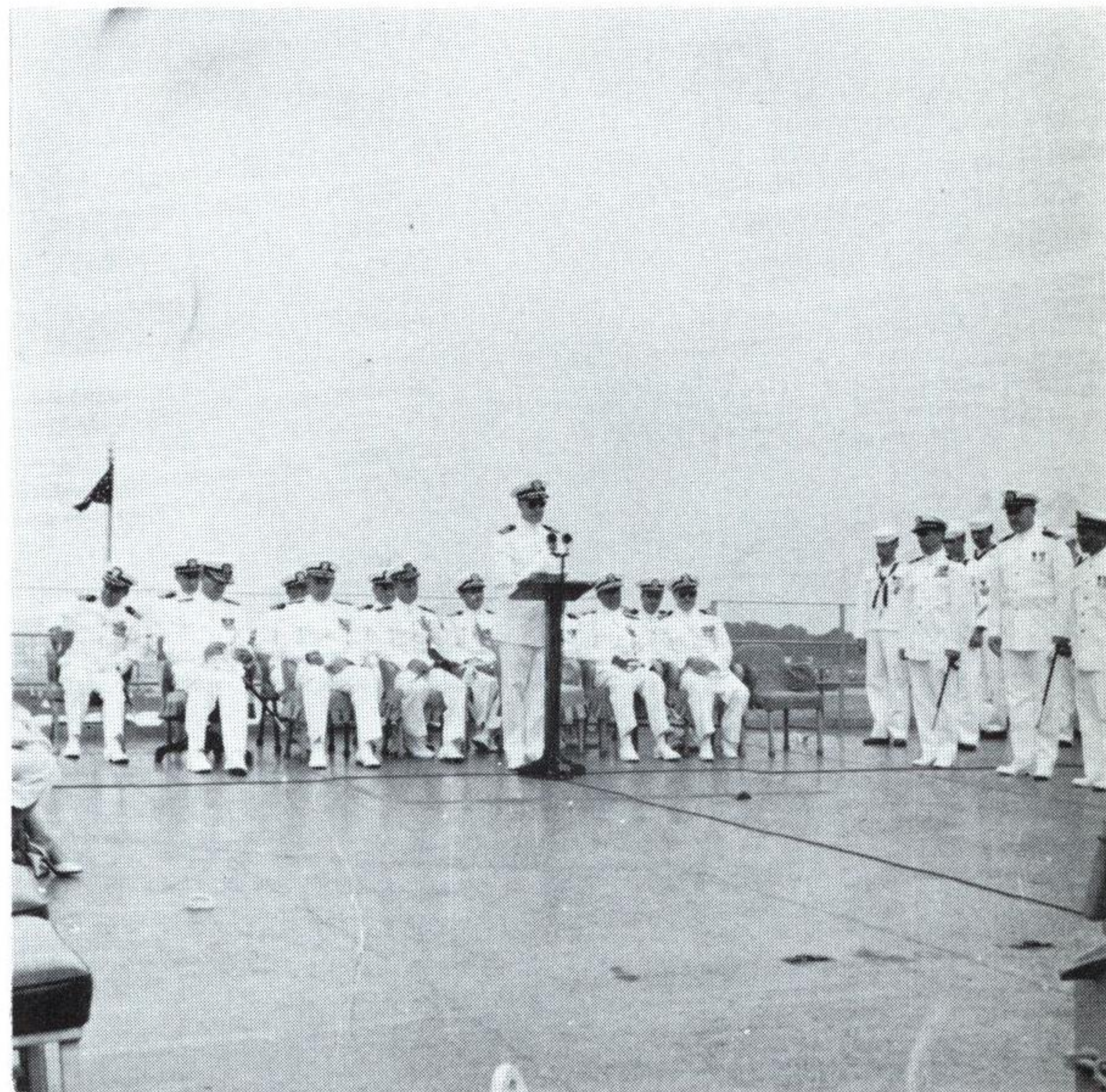
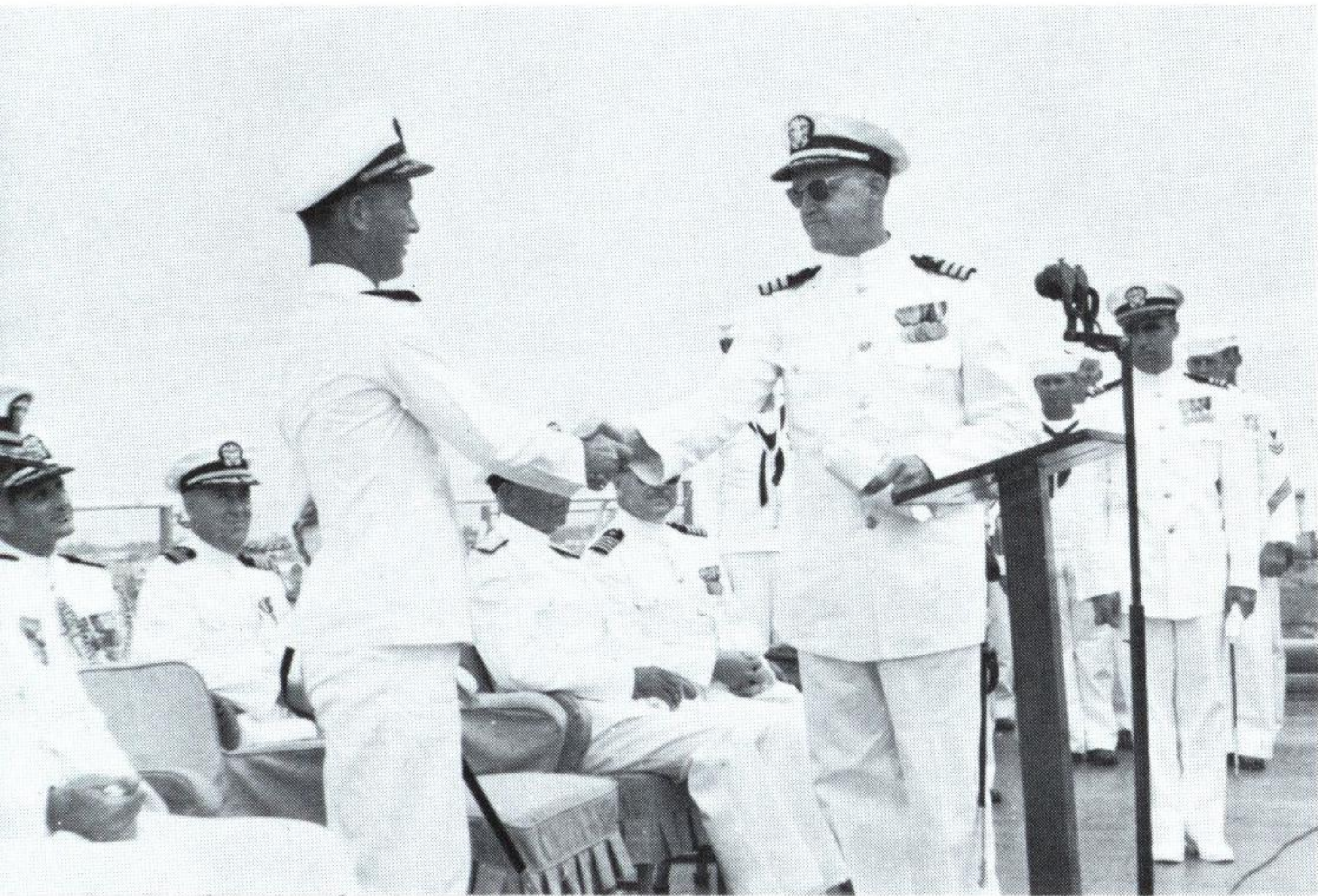


Change of Command



Departure From Norfolk



Months of preparation go into a cruise, but finally the day of departure arrives. We wave goodbye to loved ones on the pier, cast off all lines and away we go for duty with the SIXTH FLEET . . . general quarters, landings, replenishment, refuelings, competitive exercises and of course a little liberty. It will be a long time, but **somebody** has to go. And its our turn and we are "it". We pass Lynnhaven Roads and Cape Henry. Later we finish up our loading at Morehead City, weigh anchor, and the US fades from sight. It will be a long time . . .